



STATE OF MAINE
DEPARTMENT OF AGRICULTURE, CONSERVATION & FORESTRY
BUREAU OF PARKS & LANDS
22 STATE HOUSE STATION
AUGUSTA, MAINE 04333

JANET T. MILLS
GOVERNOR

AMANDA E. BEAL
COMMISSIONER

NOTICE – August 9, 2023

Applicant: Versant Power

Proposal: To maintain an existing cable and lay a second submerged cable that would extend approximately 5,500 ft. on submerged lands for electric utility purposes. The two cables would extend approximately 11,000 ft. on submerged lands for electric utility use.

Location: Sutton Island, Eastern Way, Town of Cranberry Isles

The Bureau of Parks and Lands (Bureau) has received an application to occupy submerged lands for the project described above. Pursuant to Title 12 M.R.S.A., Section 1801 & 1862, the Bureau serves as trustee of submerged lands for the State of Maine. Submerged lands include all land from the mean **low-water** mark seaward to the 3-mile territorial limit including all land below the mean **low-water** mark of tidal rivers upstream to the farthest natural reaches of the tides.

Before the proposal may take place, the applicant must obtain a lease or easement from the Bureau. A lease or easement may be granted for the project if it will not:

- unreasonably interfere with customary or traditional public access ways to, or public trust rights (fishing, fowling, recreation, and navigation) in, on or over the submerged lands;
- unreasonably interfere with fishing or other existing marine uses of the area;
- unreasonably diminish the availability of services and facilities necessary for commercial marine activities; and
- unreasonably interfere with ingress and egress of riparian owners.

A copy of the site plan is attached for information. Any interested party or anyone who is knowledgeable about the area is welcome to comment on possible impacts to the activities listed above. **Comments must be received on or before September 8, 2023.**

For more information, please contact Karen Foust, Bureau of Parks and Lands.

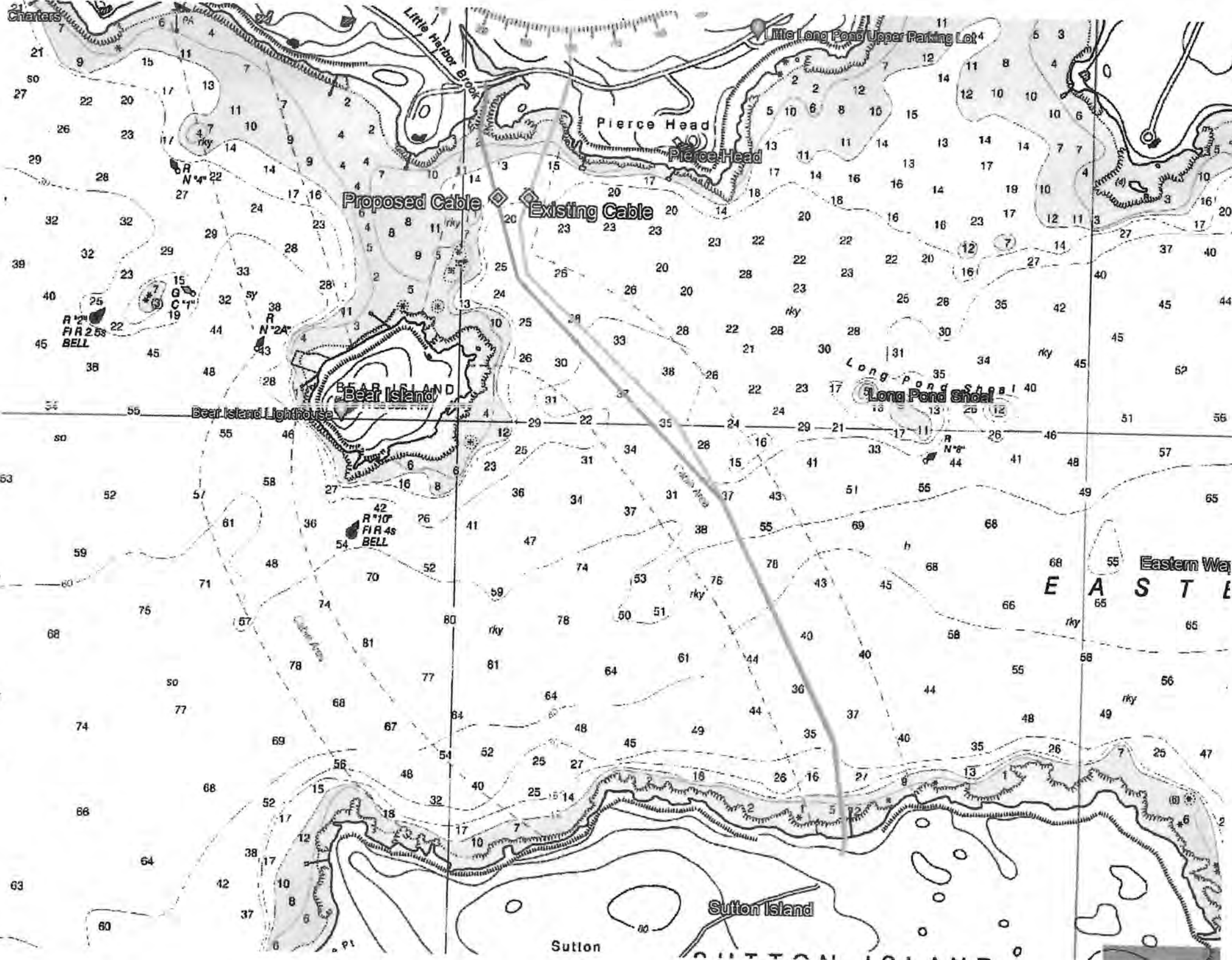
Phone: (207) 287-6128 Fax: (207) 287-6170

Email: Karen.L.Foust@maine.gov

www.maine.gov/dacf/submergedlands

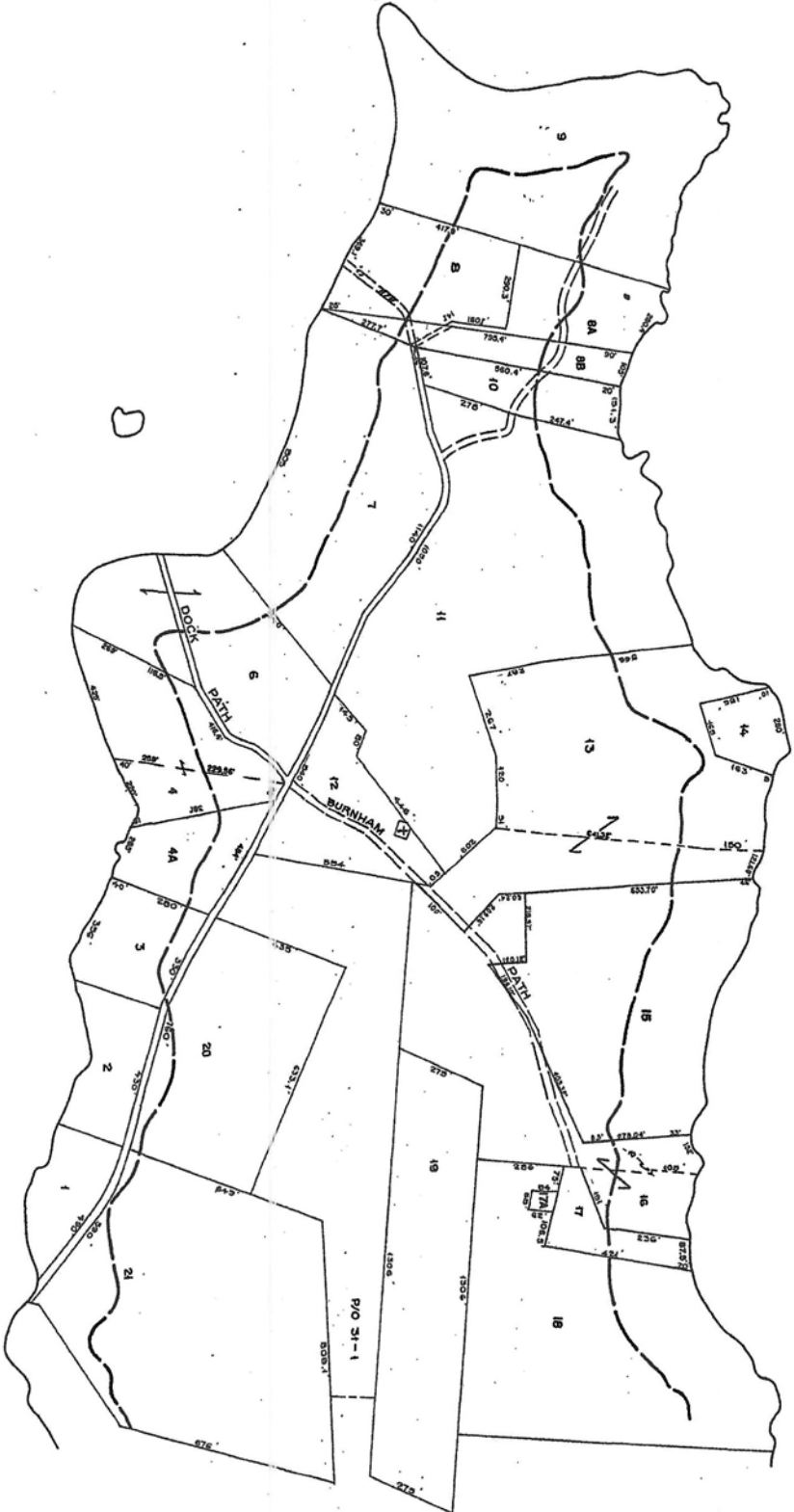
cc: Department of Marine Resources

Please note that all comments received are part of the public record and subject to the State of Maine Freedom of Access laws.





Atlantic Ocean



Atlantic Ocean

LEGEND

PARCEL NUMBERS 1

ADJACENT MAPS 2

MATCH LINE

For Assessment Purposes
Not to be used for Conveyances

SHORELAND ZONING

ZONE A-Resource Protection

PROPERTY MAP

TOWN OF CRANBERRY ISLES

MADE BY

JAMES W. SEWALL COMPANY

OLD TOWN, MAINE

SCALE 1 INCH = 200 FEET